

# HB 2017 Transit Advisory Committee

December 15, 2023

# Webex

## Chat

- Right side window
- Chats are recorded

## Participants

- Right side window
- Raise your hand

Video On/Off

Reactions

Leave Meeting

Mute/Unmute



# Meeting Agenda

|   |            |
|---|------------|
| Public comment  | 8:30 a.m.  |
| Non-TriMet Public Transportation Service<br>Provider STIF Program Updates | 8:35 a.m.  |
| FY24-25 Committee Update &<br>Departing Members                           | 9:55 a.m.  |
| Meeting Adjourns  | 10:00 a.m. |

# Public Comment



# Public Transportation Service Provider STIF Program Updates

The background features abstract, overlapping geometric shapes in various shades of blue, ranging from light to dark, creating a modern and dynamic visual effect. The shapes are primarily triangles and polygons, some with thin white outlines, set against a white background.

# Clackamas County Transit Providers HB 2017



---

KRISTINA BABCOCK

# FY22-23 STIF Impact

- Expansion of transit service in Clackamas County
  - Last mile shuttles w/Regional Coordination Dollars
    - Oregon City
    - Clackamas Industrial
    - CCC Xpress
    - Shuttle purchases
- Increased demand response services for Dialysis and Medical Rides
- Increased coordination of services between transit providers (fare integration / integrated website)
- Mt Hood area:
  - Continued additional service on the Mt Hood Express
  - New vehicles
  - Transit Hub Study



# FY24-25 STIF Plans

- Continued funding for existing MHX service
- Provide increased demand response services for Seniors and Persons with disabilities (TRP and Senior Centers and Small Providers)
- Match funds for purchase of two buses (1 for MHX and 1 for TRP)
- Transit Hub Development
- Capital purchase of one large bus for MHX
- Address missing connections identified in the Transit Development Plan (TDP)
- Regional Coordination Projects



---

DWIGHT BRASHEAR

# SMART

SOUTH METRO AREA  REGIONAL TRANSIT

- SMART is owned and operated by the City of Wilsonville
- Gave 103,000 rides in FY2021
- Nine routes: Six in town and connections to Canby, Salem, & Tualatin
- Programs: Dial-A-Ride, SMART Options; Vanpool
- All service is free except to Salem and medical trips out of town



# FY22-23 STIF Impact

## Service Accomplishments

- Eliminated fares on Route 3X (Canby) to provide equitable and affordable transportation
- Continued regional connectivity to Tualatin Park & Ride and Salem Downtown Transit Center
- Continued medical shuttle service to Meridian Medical Center (Tualatin)



# FY22-23 STIF Impact

## Capital and Planning Accomplishments

- Provided grant match for new electric bus and Transit Master Plan update projects
- Purchased electric charging station to further transition to alternative fuels and lower emissions transit



Transit Master Plan **SMART**  
SOUTH METRO AREA REGIONAL TRANSIT  
WILSONVILLE, OREGON

2023 UPDATE



# FY24-25 STIF Plans

- Continue intercity service to Tualatin Park and Ride, Salem, and Meridian Park Medical Center
- Continue administrative costs of administering the STIF program and a program reserve for projects that may exceed total planned expenses
- Electric and CNG fleet procurement and facilities expansion
- Intercity service to Clackamas Town Center
- New intercity service to Woodburn and Keizer in harmony with Cherriots' Route 80X
- SMART Transit Center TOD customer service employees to provide regional transit information
- Basalt Creek service study/plan for future services
- Bus stop and amenities plan to improve access and connections

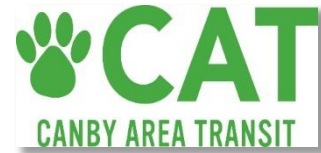


---

TODD WOOD

# Canby Area Transit

A division of the City of Canby



- Population: 17,817 (2018)
- Services:
  - 99x from Woodburn to Oregon City Monday through Saturday
  - Demand response and paratransit service Monday through Saturday
- Ridership:
  - Weekday: 99x - 61,835 / DR - 11,127
  - Weekend: 99x - 3,398 /DR - 545



# FY22-23 STIF Impact

- Saturday Services:
  - Continued to operate services on Saturday
  - Includes fixed route from Woodburn to Oregon City
  - Includes demand response and paratransit services
  - Became Fareless September 2022
- City Circulator:
  - Began October 2023
  - Operates Mon-Friday
  - Fareless Service
  - Expanded service on Saturday and Sunday



# FY24-25 STIF Plans

- ▶ Continuation of Saturday services at current levels
  - ▶ Route 99X
  - ▶ Demand response and Paratransit
- ▶ Continuation and expansion of Local Canby Circulator Route
  - ▶ Monday through Friday
  - ▶ Operate at least 12 hours per day
  - ▶ Serve Canby High School as well as most Canby Parks and businesses
  - ▶ Expand to Saturdays July 1, 2023



---

MIKE STRAUCH



- Operating in Clackamas County since 1989
  - Serving a large rural area of 100 square miles, with a population in excess of 20,000
- 3 Routes Serving:
  - Clackamas Community College (5:00am - 8:30pm, M-F; 7am - 5:00pm, Sat)
  - Canby Area Transit Center (6:30am - 6:15pm, M-F)
  - City of Molalla (7:30am - 5:30pm, M-F; 9:30am - 4pm, Sat)
- Deviated Fixed-Route service open to the public
  - City Bus Route deviates from the regular fixed-route, with advanced reservation. Service is free.
  - \$1 fare for service to Canby and Clackamas Community College.



# FY22-23 STIF Impact

- Additional service:
  - Clackamas Community College - more service during morning commute
  - Molalla - new Saturday service, 9:30am - 4pm
  - Canby - extended service morning and evening
- Improve rider safety and comfort with updated amenities and services, making transit more convenient
- Introduce tools to improve rider information, simplify trip planning, and provide riders access to real-time vehicle arrival information through Passio Go.
- Continue to pursue new vehicles to maintain service reliability and make them more efficient.

# STIF Accomplishments FY 22-23

- Added 3 new shelters, CCC, Ross Transit Center and Main SCTD Office
- Added 4 new E-Readers
- Added 6 new SIMME Seats
- Added 50 new bus signs and poles along the CCC and Canby Routes
- Added Solar Streetlights to all rural bus poles



# STIF Opportunities & Future Plans

- Preserve current service levels from initial STIF funding
  - Clackamas Community College - morning peak service and afternoon peak service
  - Molalla - Saturday service
  - Canby - morning and evening additional hours
- New Vehicles - Procuring our first electric bus/van for the City Route.
- Continue to improve rider safety and comfort and update amenities and services
  - Infrastructure - Passenger amenities & stop enhancements - Shelters, Stop Signs, Lighting, Seating
  - Rider tools - Real-time vehicle arrival information; New website to improve trip planning and rider information
- Preserve STF funding of City Route service





ANDI HOWELL



# Celebrating over 20 Years of Service

- Department in Sandy, OR
  - Sandy Population: 11,000
  - Known as Sandy Area Metro (SAM)
  - Ridership: 111,714
  - All in-town fixed routes, free of charge
  - \$1.00 dial-a-ride
  - \$2.00 out-of-town medical rides
- Routes:
    - SAM Gresham Route
    - SAM Estacada Route
    - SAM In-town Shopper Shuttle
    - SAM rides General Public Dial-A-Ride
    - Out-of-town Non-Emergency Medical rides



# FY22-23 STIF Impact

- **CONTINUED SERVICE ENHANCEMENTS:**

- Continued expanded hours on 3 routes:
  - SAM Gresham (1 hour/Mon-Friday)
  - SAM Estacada (1 hour/Mon-Saturday)
  - SAM Shopper (2 hours/Mon-Friday)

- **CAPACITY PLANNING/CONSTRUCTION PROJECT**

- Funding set aside for future expansion planning and construction of driver training/break area and maintenance bay at the Sandy Operations Center

- **PROGRAM RESERVE**

- Approved category to cover cost of preserving service.

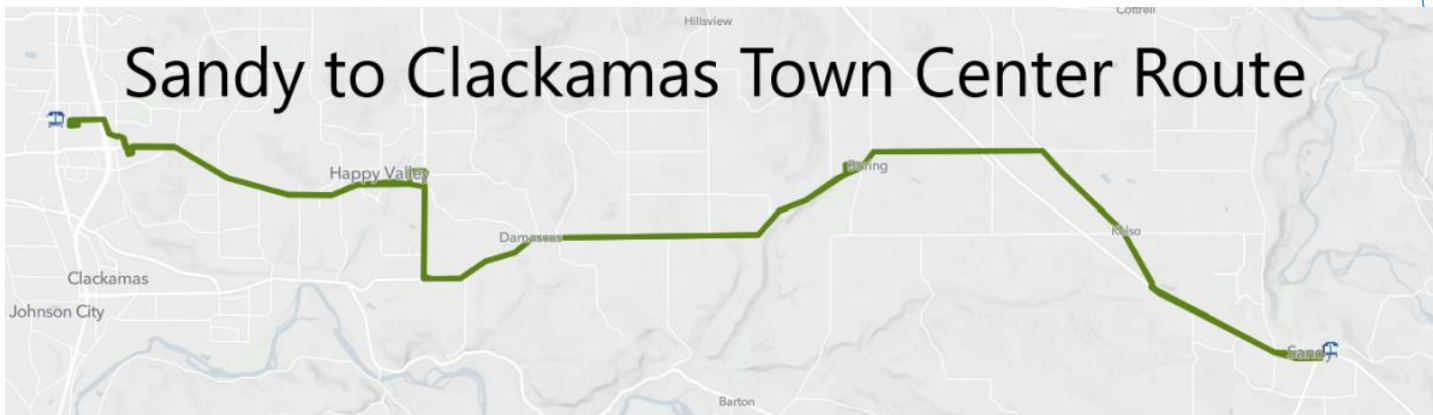
- **ADMINISTRATIVE COSTS**

- Cover costs of administering STIF program, including project/plan development, ongoing operating costs, procurement, surveys of services, expand facilities and audit



# FY24-25 STIF Plans

- CONTINUED SERVICE ENHANCEMENTS:
  - Continue expanded hours on 3 routes:
    - SAM Gresham
    - SAM Estacada
    - SAM Shopper
- NEW SERVICE ENHANCEMENTS:
  - Saturday Shopper Shuttle (5 runs)
- PROGRAM RESERVE:
  - Approved category to cover cost of preserving service if revenue sources fall or operation costs rise.
- ELECTRIC VEHICLE INFRASTRUCTURE:
  - Make Ready Infrastructure for Electric Vehicle, Charging Stations and Match for electric vehicle dependent on amount of funding received.
- ADMINISTRATIVE COSTS:
  - Cover costs of administering STIF program, including project/plan development, ongoing operating costs, procurement, surveys of services, expand facilities and audit



## Regional Coordination - FY24-25

Questions / Comments?



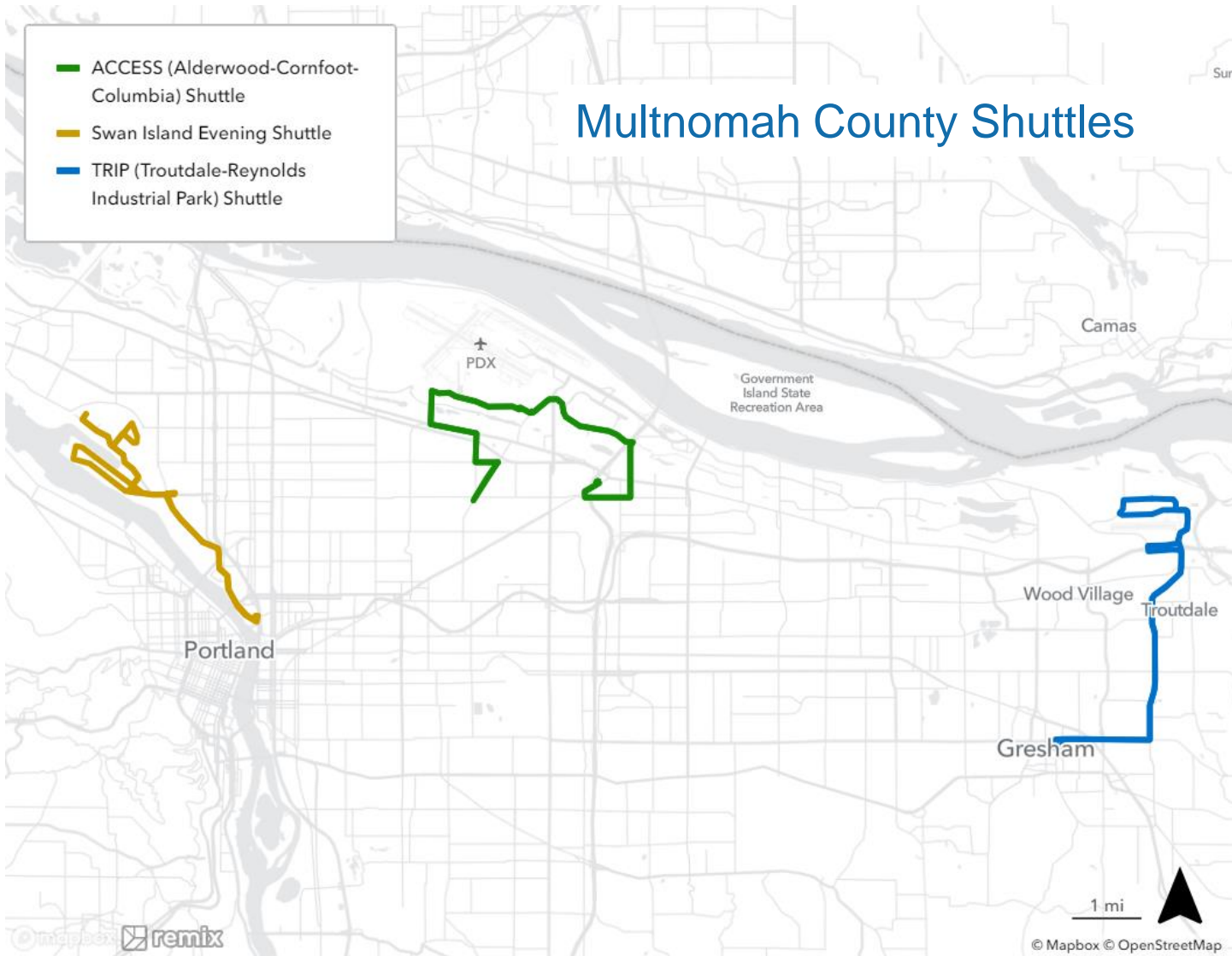
# Multnomah County

HB2017 Advisory Committee

December 15, 2023

Eve Nilenders  
Multnomah County  
Transportation Planning and  
Development

# FY22-23 Accomplishments – Regional Coordination



## FY22-23 Accomplishments – Regional Coordination

- Provided nearly 48,000 rides on 3 job connector shuttles
- Launched ACCESS shuttle

| Shuttle  | Hours   |
|--|---|
| Troutdale Reynolds Industrial Park (TRIP) Shuttle              | Saturdays, Sundays & Holidays                             |
| Swan Island Evening Shuttle                                    | Monday – Friday, 6:30 pm – 12:30 am                       |
| ACCESS: Alderwood-Cornfoot-Columbia Employment Shuttle Service | Monday – Friday, 6:15 am – 6 pm (morning/afternoon peaks) |





# **ACCESS:** Alderwood-Cornfoot-Columbia Employment Shuttle Service

<https://www.youtube.com/watch?v=8n36HxhtIME>





## HB2017 FY24-25 Plans

- Regional Coordination:
  - Continue service to Swan Island and TRIP
  - Expand and promote ACCESS shuttle
  - Conduct transit gap study
- Rural:
  - Continue and promote rural demand-response service
  - Rural Transit Element
- Transportation Service to Medicaid-eligible Community:
  - Non-medical transportation rides supporting quality of life and independence



# Questions or Comments?



For more information: [www.multco.us/transit](http://www.multco.us/transit)







# Washington County and Ride Connection STIF FY23-25 Update

TriMet HB2017 Advisory Committee Meeting  
December 15, 2023

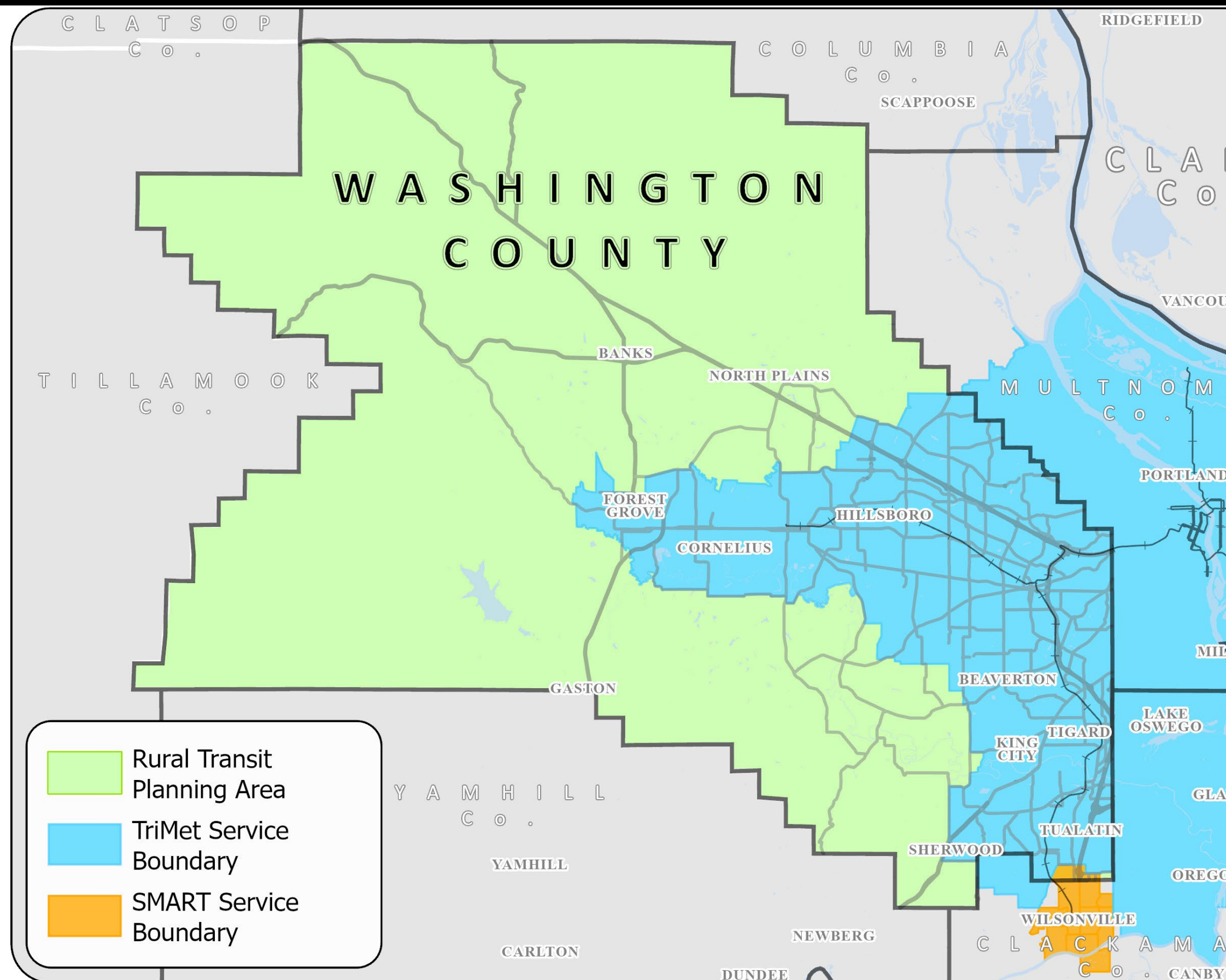
Land Use & Transportation

[www.washingtoncountyor.gov](http://www.washingtoncountyor.gov)



# Washington County Transit Development Plan

- Public Transportation Service Provider for areas outside TriMet, SMART districts
- Connect outside regions to TriMet district
- Shuttle service within district where fixed-route transit is inadequate





# → Ride Connection, Inc.

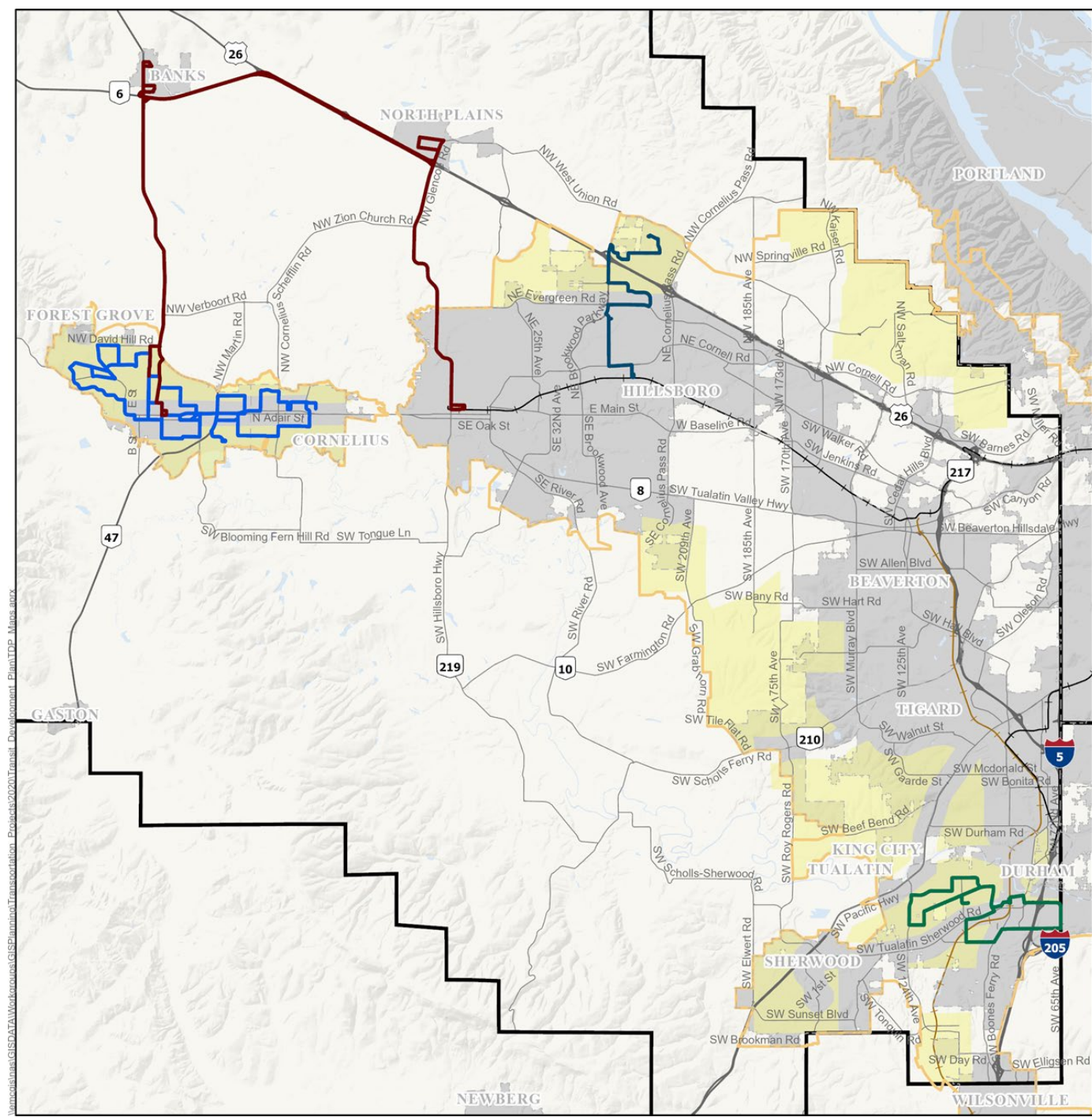
- Contracts with County as Public Transportation Service Provider
- Leverages other private, local, Federal and State resources
- Community partnerships and engagement





# Ride Connection's STIF funded services in Washington County

- Demand response
  - Older adults, people with disabilities as well as general public outside TriMet and SMART
- Community connectors
  - Over 110,000 annual rides (pre-pandemic)
  - Serving over 170,000 people, 42,000 students, and nearly 15,000 low-income households







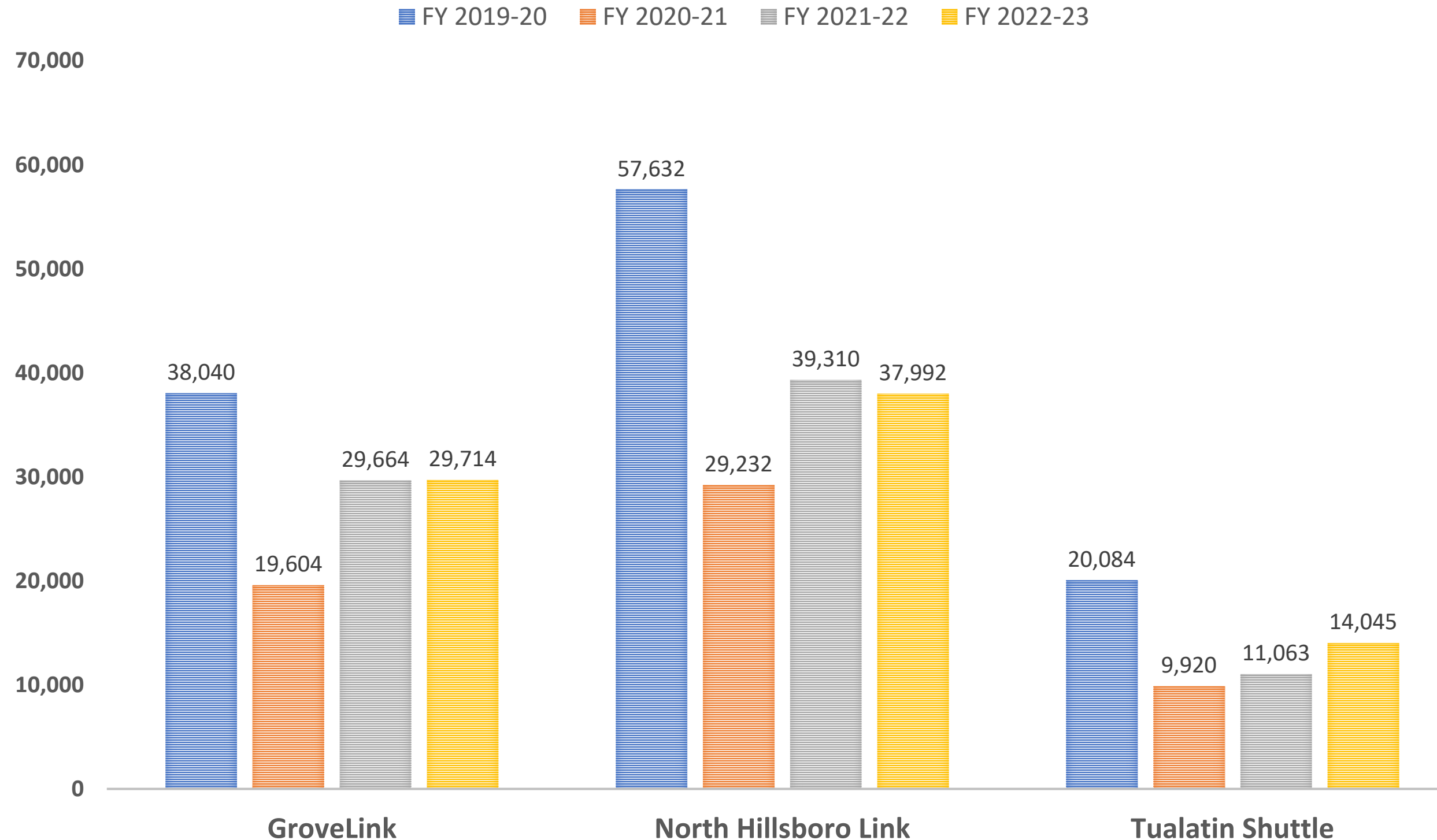
# Accomplishments since 2021

- Tualatin Shuttle Expansion
  - New Green line route
  - Restructured Red line route
- Grovelink and Cornelius Saturday service
- Westlink expansion
- Stop improvements
- Technology upgrades
  - Cameras
  - Automatic Passenger Counters
  - Real-time information



# Post-COVID Ridership Trends

## COMMUNITY CONNECTOR ANNUAL RIDERSHIP





# Community Connector Shuttles: FY 2023-25 Investment Priorities

## Program

### Maintain current/committed services

- GroveLink, North Hillsboro, Tualatin shuttle

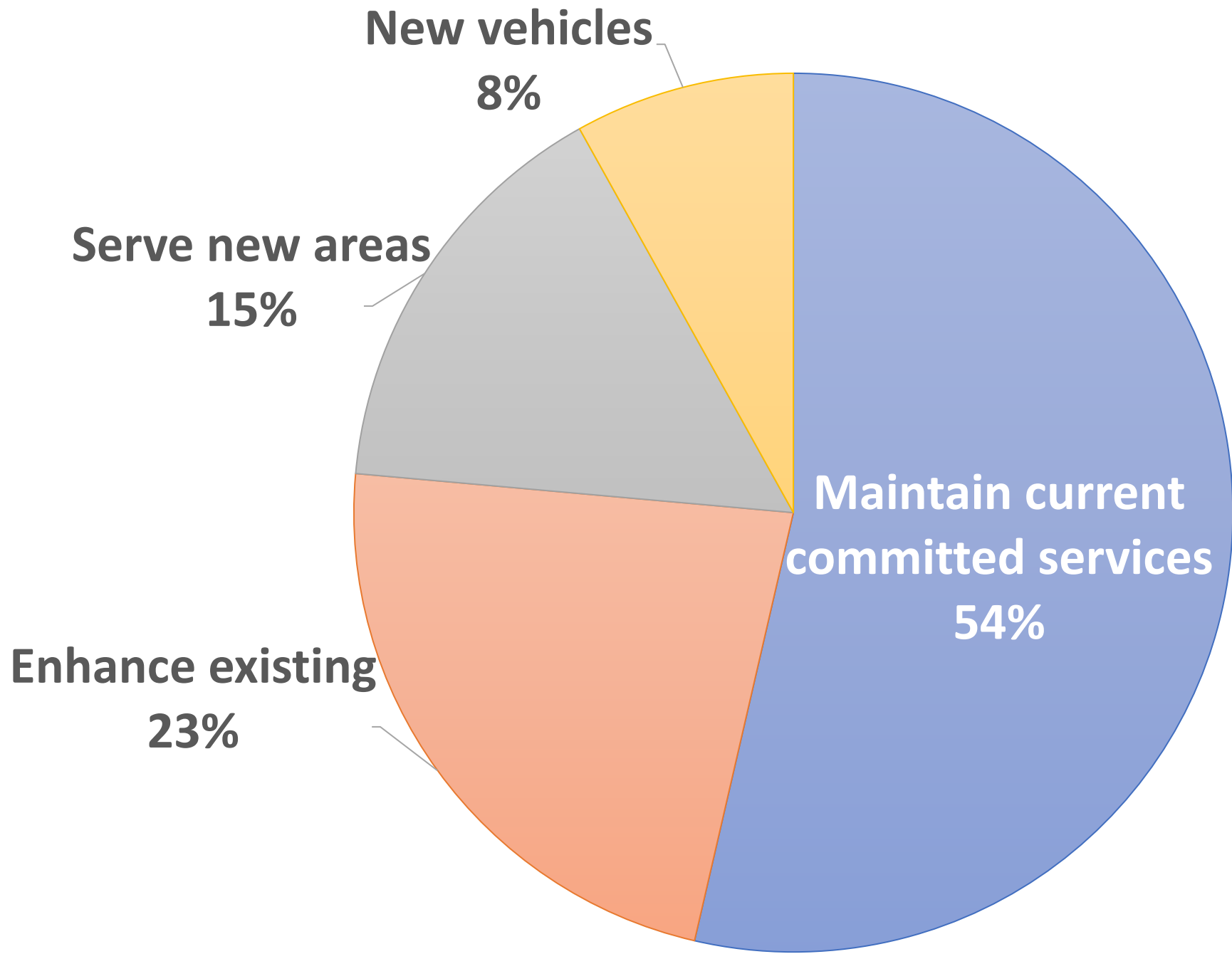
### Enhance existing services

- Cornelius weekday
- North Hillsboro deviation/peak service
- Tualatin Green line-grant funded FY 23

### Serve new areas

- King City/Durham
- Bethany/Cedar Mill

### Four new vehicles



*Funded by Regional Coordination funding allocated by TriMet's HB2017 Advisory Committee*

# Thank you!



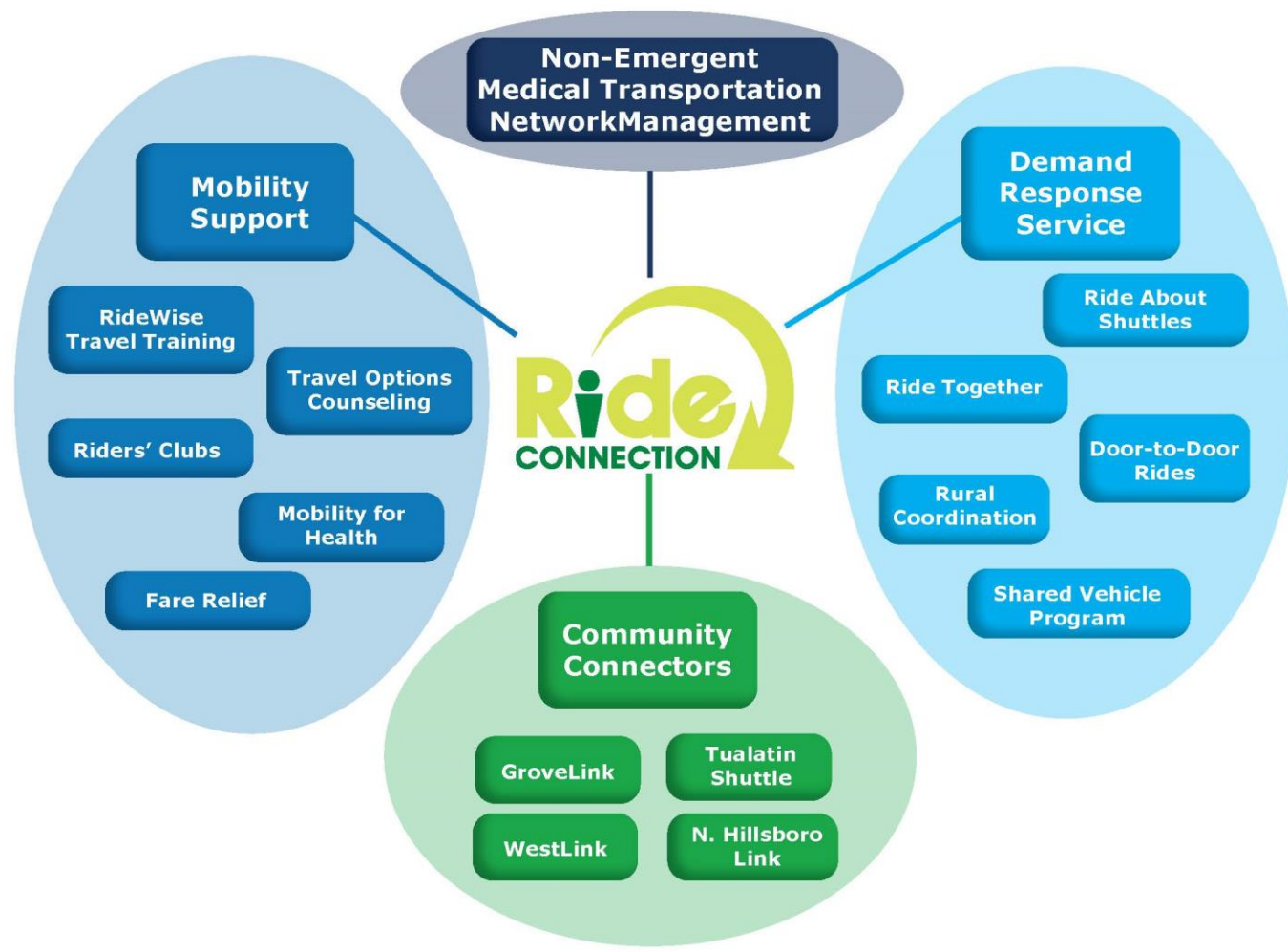
Land Use & Transportation  
[www.washingtoncountyor.gov](http://www.washingtoncountyor.gov)

# Tri-County Transportation Network

Serving our region since 1988



*Linking accessible, responsive transportation alternatives with individual and community needs.*







## **Network Services Funded by STIF**

- Network Coordination
- Direct Services
- Technology
- Match
- Capital Purchases

**Largest nonprofit  
transportation provider  
in Oregon!**

# Network Partners

- Asian Health and Service Center
- Centro Cultural de Washington County
- Clackamas County Consortium
  - Canby Adult Center
  - Estacada Community Center
  - Gladstone Senior Center
  - Hoodland Senior Center
  - Lake Oswego Adult Community Center
  - Milwaukie Center
  - Molalla Adult Community Center
  - Pioneer Community Center
  - Sandy Senior Community Center
- Exceed Enterprises
- Impact NW
- IRCO
- Metropolitan Family Service Project Linkage
- Michael's Place
- Neighborhood House
- Providence ElderPlace
- Ride Connection Direct Service
- Rosewood Initiative
- Transportation Reaching People
- Urban League of Portland



# Impact NW

*"I have so much gratitude for Impact NW and Ride Connection. Thank you to everyone who makes this network. I am getting stronger due to this help and assistance."*



# Centro Cultural

*"I feel very grateful for the service I receive from Ride Connection, as they always provided the assistance I need for my transfers."*





**Thank you!**

**Questions?**

# 2024-25 Committee

# New Committee Members

| Name                     | Organization   |
|--------------------------|--|
| Andrew Aebi              | TriMet Board District #3   |
| Brandon Brezic           | Central City Concern   |
| Comm. Julia Brim-Edwards | Multnomah County   |
| Shante' Hinshaw          | Constructing Hope  |
| Marshall McGrady         | IBEW – Local 48  |
| Michael Morrow           | TriMet Board District #7   |
| Phil Sellinger           | TriMet Board District #2   |
| Dyami Valentine          | Public Transportation Service Providers –<br>outside the TriMet District |

# Departing Committee Members

| Name                        | Organization              | Terms Served |
|-----------------------------|---------------------------|--------------|
| Cameron Bennett             | Portland State University | 1            |
| Victoria (Vee) Paykar       | Climate Solutions         | 1            |
| Dwight Brashear             | SMART                     | 3            |
| Pat Daniels                 | Constructing Hope         | 3            |
| Mercedes Elizalde           | Central City Concern      | 2            |
| Jody Guetzloe Parker        | OR-ID Council of Laborers | 2            |
| Comm. Jessica Vega Pederson | Multnomah County          | 3            |
| Huy Ong                     | OPAL                      | 3            |
| Coi Vu                      | IRCO                      | 2            |

**Meeting Adjourned**